

The P style coupling is designed specifically for brackish, MF, UF and NF membrane filtration, permeate and other low pressure applications¹

Pressure rating

2 X Safety margin

0.75" – 2.5"	250 psi (17 bar)
3.0" – 4.0"	225 psi (16 bar)
6.0" – 8.0"	100 psi (7 bar)

Description

- Housing - Glass fiber reinforced composite resin: UV resistant and non-water absorptive. Completely corrosion resistant.

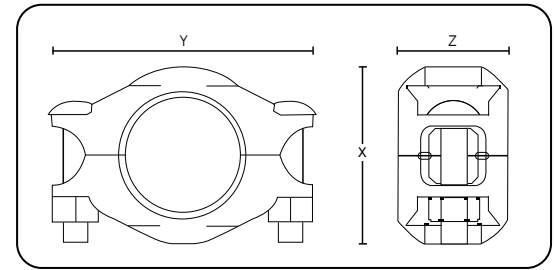
- Gaskets - EPDM rubber, suitable for hot and cold water service. Two shapes of gaskets available: C-shaped or Flush-fit. NSF/ANSI 61 approved or equivalent for drinking water system components. *Not suitable for petroleum service.*

- Bolts/ Nuts / Washers - Round-head, square-neck, 316 stainless steel bolts and heavy hex nuts conform to ASME B18.5 and B18.2, respectively. Washers are heavy pattern 316 stainless steel.

Note

For the use of Piedmont's couplings on cyclic axial displacement systems, please consult with Piedmont for design and installation guidance.

¹Working pressures have been determined based on required pressure test outlined in AWWA C606 standard.



Style P Specifications

Nominal size inch	Dimensions inch (mm)			Approx. weight lb (kg)	Working pressure* psi (bar)
	X	Y	Z		
3/4	2.20 (55.9)	3.04 (77.2)	1.73 (44.0)	0.38 (0.17)	250 (17)
1	2.64 (67.1)	3.41 (86.7)	1.73 (44.0)	0.39 (0.18)	250 (17)
1-1/4	2.97 (75.4)	3.65 (92.7)	1.73 (44.0)	0.51 (0.23)	250 (17)
1-1/2	3.22 (81.8)	3.90 (99.1)	1.74 (44.2)	0.53 (0.24)	250 (17)
2	3.75 (95.3)	4.41 (112.0)	1.79 (45.5)	0.75 (0.34)	250 (17)
2-1/2	4.25 (108.1)	5.29 (134.4)	1.86 (47.2)	0.79 (0.36)	250 (17)
3	5.31 (134.9)	6.41 (162.8)	2.10 (53.3)	1.31 (0.59)	225 (16)
4	6.36 (161.6)	8.72 (221.4)	2.40 (61.0)	2.18 (0.99)	225 (16)
6	8.82 (224.0)	10.18 (258.6)	2.52 (64.0)	3.30 (1.50)	100 (7)
8	11.20 (284.5)	13.54 (343.9)	2.75 (69.9)	5.60 (2.54)	100 (7)

*For schedule 40s cut-groove pipes

