

**Pressure Rating:
1200 psi (82 bar), SCH 40s
(special alloys), cut grooves¹.**

• Housing - Duplex or superduplex stainless steel, type CE8MN (UNS # J93345) conform to ASTM A995/A995M Grade 2A. Also available in CE3MN (UNS # J93404, Grade 5A). For other alloy options, please contact Piedmont.

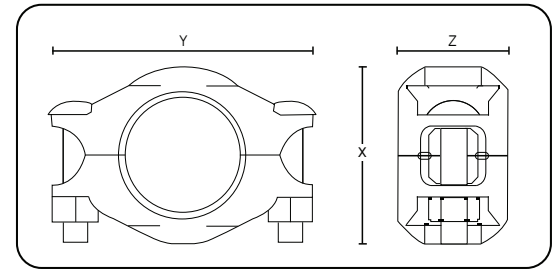
• Gaskets - EPDM rubber, suitable for hot and cold water service. Two shapes of gaskets available: C-shaped or Flush-fit. NSF/ANSI 61 approved or equivalent for drinking water system components. *Not suitable for petroleum service.*

• Bolts / nuts / washers - Round-head, square-neck, 316 stainless steel bolts conform to ASME B18.5. Heavy hex silicon bronze nuts (type 651) for sizes from 3/4" to 3", 316 stainless steel nuts for 4" and above. Washers are heavy pattern 316 stainless steel.

NOTE

For the use of Piedmont's couplings on cyclic axial displacement systems, please consult with Piedmont for design and installation guidance.

¹Working pressures have been determined based on generally accepted standard specification for performance of gasketed mechanical couplings, in accordance with ASTM F1476. For use on pipes thinner than schedule 40s and for rolled grooves, please consult with Piedmont. Pipe's schedule and material must comply with the requirements of ASME B31.1.



Style D Specifications					
Nominal size inch	Dimensions inch (mm)			Approx. weight lb (kg)	Working pressure* psi (bar)
	X	Y	Z		
3/4	1.91 (48.5)	3.04 (77.2)	1.68 (42.7)	0.81 (0.37)	1200 (82)
1	2.29 (58.2)	3.42 (86.9)	1.68 (42.7)	0.97 (0.44)	1200 (82)
1-1/4	2.50 (63.5)	3.65 (92.7)	1.71 (43.4)	1.08 (0.49)	1200 (82)
1-1/2	2.76 (70.1)	4.06 (103.1)	1.71 (43.4)	1.21 (0.55)	1200 (82)
2	3.24 (82.3)	4.38 (111.3)	1.85 (47.0)	1.92 (0.87)	1200 (82)
2-1/2	3.74 (95.0)	5.30 (134.6)	1.85 (47.0)	2.14 (0.97)	1200 (82)
3	4.48 (113.8)	6.02 (153.1)	1.85 (47.0)	2.64 (1.20)	1200 (82)
4	5.70 (144.8)	7.60 (193.0)	2.02 (51.3)	4.54 (2.06)	1200 (82)
5	7.22 (183.4)	9.50 (241.5)	2.02 (51.3)	9.30 (4.23)	1200 (82)
6	8.18 (207.8)	10.25 (260.4)	2.02 (51.3)	9.74 (4.42)	1200 (82)
8	10.89 (276.6)	13.44 (341.5)	2.34 (60.7)	24.50 (11.10)	1200 (82)
10	13.28 (337.3)	15.88 (403.3)	2.55 (64.8)	33.46 (15.18)	1200 (82)
12	15.28 (388.1)	17.38 (441.4)	2.55 (64.8)	34.82 (15.80)	1200 (82)

*For schedule 40s cut-groove pipes

