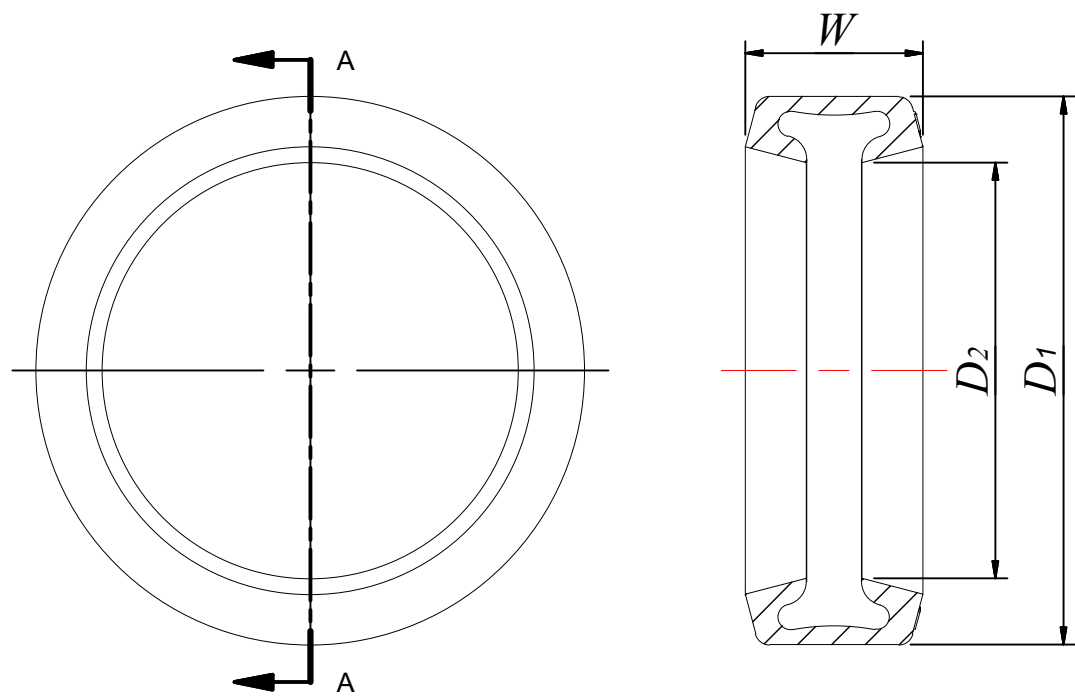


4

3

2

1



SECTION A-A



C-SHAPED GASKET



FLUSH-FIT GASKET

NOMINAL SIZES (INCH)	D1 INCH [MM]	D2 INCH [MM]	W INCH [MM]
3/4	1.64 [41.7]	0.89 [22.5]	1.10 [27.9]
1	1.88 [47.8]	1.10 [27.9]	1.10 [27.9]
1-1/4	2.23 [56.5]	1.40 [35.6]	1.10 [27.9]
1-1/2	2.46 [62.5]	1.66 [42.1]	1.11 [28.2]
2	2.95 [74.9]	2.10 [53.4]	1.11 [28.2]
2-1/2	3.43 [87.0]	2.60 [66.0]	1.11 [28.2]
3	4.08 [103.6]	3.25 [82.6]	1.11 [28.2]
4	5.25 [133.4]	4.15 [105.4]	1.20 [30.5]
5	6.26 [159.0]	5.10 [129.5]	1.20 [30.5]
6	7.40 [188.0]	6.26 [159.0]	1.20 [30.5]
8	9.53 [242.0]	8.15 [207.1]	1.45 [36.7]
10	11.57 [293.9]	10.38 [263.7]	1.45 [36.7]
12	13.63 [346.3]	12.30 [312.4]	1.45 [36.7]

NOTES:

- DIMENSIONS SHOWN IN THE DRAWING AND OUTLINED IN THE TABLE INDICATE NOMINAL VALUES, WHICH APPLICABLE BOTH FOR C-SHAPED AND FLUSH-FIT GASKETS.
- GASKET MATERIAL IS EPDM ELASTOMER.

PROPRIETARY AND CONFIDENTIAL NOTE:
 THE INFORMATION CONTAINED IN THIS DRAWING IS THE SOLE PROPERTY OF PIEDMONT PACIFIC. ANY REPRODUCTION IN PART OR AS A WHOLE WITHOUT THE WRITTEN PERMISSION OF PIEDMONT PACIFIC IS PROHIBITED.

REV		DATE	REVISION DESCRIPTION	DRAWN	CHKD	ENG	APPVD
1.0	01-12-2016		GASKET TECHNICAL DRAWING	AH	AH	AH	



UNLESS NOTED OTHERWISE
 INTERPRETATION: ANSI Y14.5
 TOLERANCES: ±0.02" [0.5 MM]
 ANGLES: ±1.0°
 HOLE SIZES: ±0.01" [0.25 MM]
 HOLE CENTERS: ±0.01" [0.25 MM]
 SURFACE FINISH ON PART: 125
 SURFACE FINISH ON DRAWING: 32
 DO NOT SCALE PRINTS

PIEDMONT PACIFIC
 GROOVE END FLEXIBLE PIPE COUPLING

TITLE:				
TECHNICAL DRAWING OF EPDM GASKET				
SCALE:	UNIT:	DRAWING NO.	SHEET:	REVISION:
N/A	INCH [MM]	1.0	1.0	0

4

3

2

1