



Engineering and manufacturing of GRP products
for water treatment



CALPLAS COMPANY

Funded in 1970, CALPLAS started producing polyester tanks and small pool filters. From that time till today, where CALPLAS produces a vast range of products sold worldwide, our company has acquired an advantageous know-how that has allowed CALPLAS to become a synonymous with engineering, quality and guaranty.



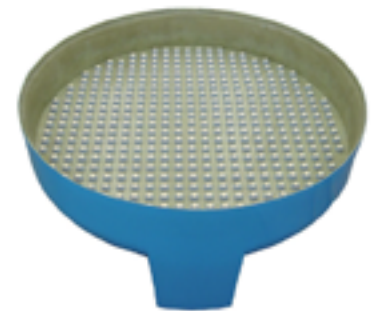
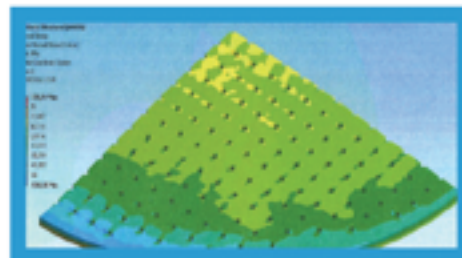
GRP PRODUCTS ENGINEERING

Design and calculation of our products
 Hand lay-up technology
 Design code: AD-Merkblatt & British Standard & EN 13121
 Redesign of steel products in GRP
 Finite element calculation
 Different chemical barriers



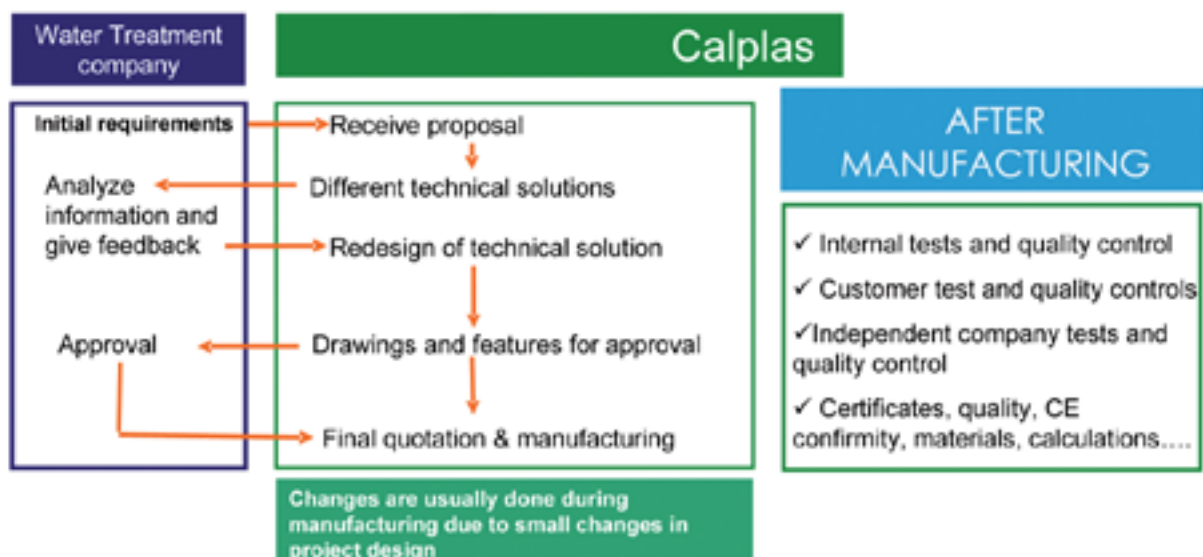
Finite element method

Example for big diameter nozzleplates



WORKING FLOW EXAMPLE

Ad-hoc manufacturing for water treatment



QUALITY



Design code: AD-Merkblatt N1 & BSI & EN 13121

Flanges and connections manufactured in polyester. Dimensions and positions according to customers requirements.

Lids and manhole: different material depending on equipment model (polyester, plasticized steel, PVC or transparent methacrilate for 2.5 bar equipments).

Know-how: More than 40 years manufacturing auxiliary elements for water treatment.

Declaration of conformity in accordance with Pressure Equipment Directive (97/23/EC) Equipment quality control and pressure test before shipping



Ionic & cationic exchangers



Ø 2800 x 7040 (desalination plant)



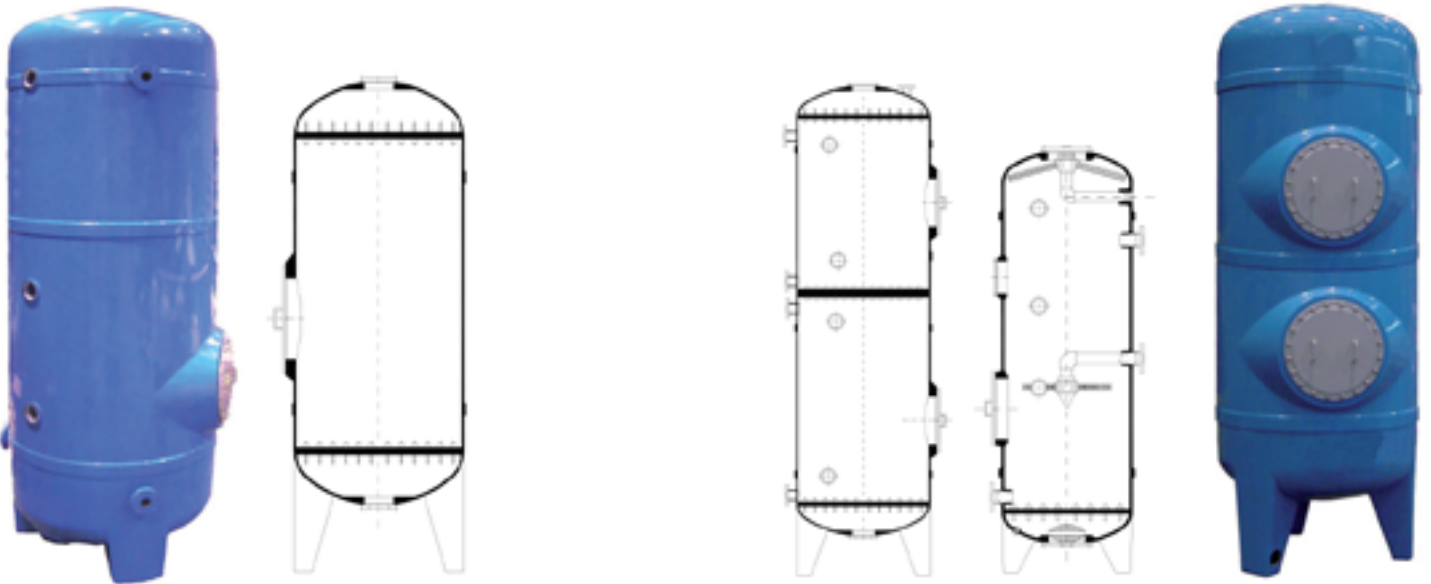
Cation & anion set



IONIC EXCHANGERS, MIXED BEDS

Equipments for different ion exchange processes: anion, cation, double anion, double cation, mixed bed,...

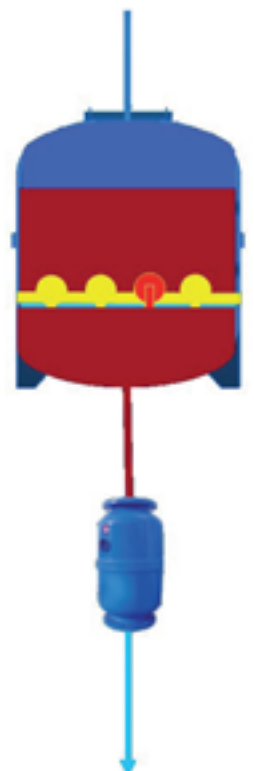
- Special chemical barrier for ionic exchange resins regeneration
- 1,2 or 3 nozzleplates option
- Ad-hoc cylindrical height
- Customizable products
- Up to Ø3000 and 6 bar



MEDIATRAPS



- Prevents leakage of filter media around facilities
- Suitable for different media (ion-exchange resins, sand, anthracite, AC, AFM,...)



- Designs from 20 m³/h up to 500 m³/h
- PROTECTED INDUSTRIAL DESIGN

HORIZONTAL FILTERS

Ø1440-3000, P=2,5-6 bar,

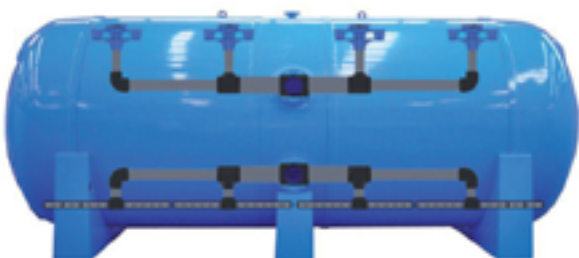


- Different water distributors configuration depending on filter media (sand, AC, anthracite,...)

- Distribution for water or water+air washing
Polyester flanges: type (DIN, ANSI, JIS, ...) and diameter according to the order.

- Elliptical polyester holes

- Polyester supports



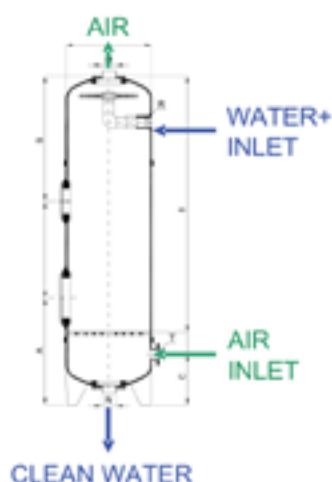
Ø (mm)	Total length (mm)	Filtering surface (m2)
1440	2900	3,9
	3700	5,0
	4500	6,2
	5300	7,4
	6100	8,5
1640	3210	4,5
	3920	6,0
	4720	7,2
	5500	8,5
	6320	9,8
1840	3100	5,2
	3900	5,6
	4700	8,1
	5500	9,6
	6300	11,1
2010	3350	6,5
	4150	8,0
	4950	9,5
	5650	11,0
	6450	12,7
2340	3520	7,4
	4300	9,3
	5100	11,2
	5900	13,0
	6600	15,0
2550	3450	8,0
	4350	10,0
	5150	12,3
	6000	14,1
	6850	16,5
2800	3680	9,3
	4500	11,6
	5350	14,0
	6230	16,4
	7040	18,5
3000	NEW: ASK FOR INFORMATION	

DEGASIFIERS

Ø415-2550



- Removal of dissolved gases from water
- Different chemical barriers depending on dissolved gases
- Ad-hoc designs
- Clean water storage tank is also available with the degasifier





MIXING TANKS



Ø520-2550

- Stir connections
- Level control threads
- Ad-hoc designs

DECANTERS



Ø1260-2550

- Gravity sludge thickeners
- Level meter if required



POOL PRODUCTS

FILTERS for private and public swimming pools



PUMP STRAINERS
Baskets = 4-75 L
Connections up to DN500



TABLET DISSOLVERS



Media Traps



FILTERS AND FILTRATION COLUMNS

STANDARD FILTERS

SMALL FILTERS:



P=2,5-7 bars / Filtration media: Sand, AC, AFM

MODEL	Ø (mm)	H(mm)	Inlet/outlet connections	Flow max (m3/h)
FA-6	415	690	1 1/2"	6
FA-8	460	700	1 1/2"	8
FA-10	520	760	1 1/2"	10
FA-15	640	790	1 1/2"	15
FA-20	720	890	2"	20
FA-30	840	910	2"	28
FA-35	960	1010	2 1/2"	35

MODEL	Ø (mm)	H(mm)	Inlet/outlet connections	Flow max (m3/h)
HF-6	415	821	1 1/2"	6
HF-8	460	821	1 1/2"	8
HF-10	520	891	1 1/2"	10
HF-15	640	946	1 1/2"	15
HF-20	720	1065	2"	20
HF-30	840	1125	2"	28
HF-35	960	1135	2 1/2"	35

BIG FILTERS:



P=2,5-6 bars / Filtration media: Sand, AC, AFM,...

MODEL	Ø (mm)	H(mm)	Flow max (m3/h)
FB-40	1010	1200	40
FB-50	1160	1300	50
FB-60	1260	1350	60
FB-80	1440	1470	80
FB-100	1640	1670	100
FB-125	1840	1760	128
FB-150	2040	1870	158
FB-200	2340	2000	205
FB-250	2550	2070	250
FB-300	2800	2190	300
FB-350	3000	2450	350

FILTRATION COLUMNS:

Ø415-960 P=2,5-7 bar (0,12 – 0,7 m³)



- Customizable products
- Ad-hoc cylindrical height
- Different configuration depending on filtration media (sand, AC, anthracite, AFM,...): nozzleplates, arms distributions,...
- Polyester flanges and threads
- Other ad-hoc accessories: sight glasses, manhole, handhole, emptying hole, lifting device,...

Ø1010-3000, P = 2,5-6 bar (0,8 – 8 m³)





calplas@calplas.com
www.calplas.com

